

South Woodham Ferrers



Quarterly Newsletter - Autumn Edition



Thanks to Mary and her team for such a well organised,
Summer Banquet

Newsletter N° 189

From the Chair

Hello everyone, my name is David Hayes, and this is my first from the chair. I'm fairly new to U3A so I hope you will bear with me over the next few months while I get to grips with my new role as your chairman. It's a role I very much look forward to serving and will do so to the best of my ability.

I'm pleased to be able to report that we have another three new members on the committee, Angela Weaver vice chairman, Janet Kelly, and Elaine Taylor. You will find a little more information about all of us a little further into the newsletter.

We have a short list of people who still need to complete their renewal applications, if you could contact the membership secretary, Kay Miles, to complete the process it would be most helpful.

Our next monthly meeting is on the 2nd of August when the speaker will be Alison Charles who will be giving us tips on how to protect the environment. The actual title of her talk is 'A Cleaner Greener Life', Something which is very topical at the moment, and I'm sure will be most interesting.

Looking forward to meeting more of you at the next monthly meeting.

David - Chairman SWF u3a

Committee Membership

| | |
|----------------------|-------------------|
| Chairman | David Hayes |
| Vice Chairman | Angela Weaver |
| Secretary | Ann Woolley |
| Treasurer | Kate Smith |
| Membership Secretary | Kay Miles |
| Speakers Secretary | Shirley Masterson |
| Group Coordinator | Allen Surrey |
| Social Secretary | Mary Brindley |
| Publicity | Roger Gatford |
| Website & Newsletter | Bob Tyas |
| Member | Janet Kelly |
| Member | Elaine Turner |

New Committee Members

It was great to see four new members join our committee at the recent AGM. Please see their introductions below:

David Hayes - Chairman

I'm in my late 60s and we moved to South Woodham in the 80s. My wife passed away 3 years ago but I retired from a career at Ford Motor several years before that, so we had some time together. I have an adult daughter who lives in Woodham. My interests include Tai Chi, London, Social History (people and society rather than monarchs and wars), technology and socialising with friends

Angela Weaver - Vice Chairman

Hi, my name is Angela Weaver I am 67 years old and grew up in North London. I am married to Tony who is also a u3a member. I retired from my job with NACRO a national crime prevention charity in 2017. We have lived in South Woodham Ferrers since 1989 and have four children and six grandchildren.

Tony and I joined the u3a to meet new friends and to join in with some of the activities on offer, use it or lose it as they say. My interests are spending time with family and friends, crafting with the grandchildren, Tai Chi, exercise, cooking, reading, theatre, travel and socialising.

Janet Kelly - Member

I joined the u3a when I retired several years ago and greatly appreciate the opportunities it offers for trying new or established skills, and most importantly for friendship. I have joined the Committee this year as I now have some free time to devote to it. Personally, I think South Woodham Ferrers would be a much poorer place if we didn't have so many community activities including the u3a - there is something for everybody if you wish to take advantage of it. How lucky are we to have so much on our doorstep!

Elaine Turner - Member

I have lived in SWF with my husband for 33 years and we enjoy walking our spaniel every day along the riverside, and other local walks we have on our doorstep.

I worked for forty years, the last thirty of which was in Electricity Transmission where I met my husband. I was lucky enough to get voluntary redundancy eight years ago, at the age of 55, which enabled me to take up voluntary positions at Dogs Trust and Hyde Hall. I also joined the u3a at the same time.

I hope I can bring some new ideas to the committee and more than happy to help out where and when and as required.

Webmaster Report

Those of you who have been using the old SWF website to access the new will have noticed that it has now disappeared. To access the new, you will now need to use the following address:

<https://u3asites.org.uk/sth-woodham-ferrers/welcome>

I appreciate that its rather long, however, when we go over to the new National u3a site development platform, in the not-to-distant future we do have the opportunity to shorten the address and we will definitely be doing that.

Remaining Speakers for 2023

| | |
|---------------------------|--|
| August 2 nd | A cleaner, greener life. Alison Charles gives us tips on how we can protect the environment. |
| September 5 th | Nature through the Seasons Part 2. Roger Hance visited us in March 2022 with Part 1. Now we see photos of Autumn and Winter. |
| October 4 th | Continuity Capers. Sally Lawrence amuses us with broadcasting anecdotes. |
| November 1 st | Lost on the Somme. Julian Whybra prepares us for Remembrance Day and reminds us about the well-known people lost in World War 1. |
| December 6 th | Christmas Traditions and Customs. Mark Lewis puts us in the mood for the Festive Season. |

Social Activities

Summer Banquet

Tuesday 20th June saw our summer banquet at Rettendon Lodge and what a great occasion it was. Over 100 members of the SWF u3a plus a few guests arrived by taxi, car or minibus to enjoy an afternoon of fun. We were in the marquee in the garden and the weather was kind to us. Entertainment was provided by George

Bone, the pianist while we enjoyed a lovely three course lunch. While we had coffee there was a table magician together with our fabulous member Jan Rook who hilariously served coffee on a wobbly tray dressed in overalls and slippers! The ukulele band Yesterukes entertained us for the rest of the afternoon with lots of songs we could join in with and even had a lot of us up dancing - you're never too old!! The banquet finished with a presentation to Mary Brindley who had organised a fantastic event with her team of helpers.



Some of the Happy Diners

Quiz Night

Please don't forget we have Quiz Night on Friday 20th October starting at 7pm. More details to follow closer to the event. Please look out for emails or look at the notice board at the u3a meeting for updates.

National u3a Week

This year's national u3a week is 16-24 September. We are planning to have a stand outside Sainsbury's on Friday 22nd September and if any of the group leaders have photos of their groups or activities that we can use on the display please pass them to Roger Gatford or any member of the committee. We will also be looking for help to man the stand so please let Roger know if you are able to help.

News from the Groups

Eco Group

We have had an outing to Dave's Garden to see what he has in place for an environmentally friendly garden - lots of water butts, compost heap, a variety of planting but you need to have a good size garden. We will be looking at supermarket policies in July - is there something you would prefer to see in supermarkets (or not see!) - and electric cars in August. We plan to feed back our findings in due course. If anyone feels there is a particular area that we could investigate or take action on, please let us know.

Ann Woolley

Gardening

The Gardening Group meets up on the 2nd Monday of the month. In August our next outing is to a garden called Kamala in Hockley. In September we have a tour of Writtle college and in October we have a coach trip to Kew Gardens. If you are interested in visiting any of these gardens and would like to join the Gardening Group, please come and see us at our table at the main meeting.

In the past three months we have visited Peacocks in Margaretting which is a fantastic 10 acre garden, In June, Rhona who is one of our members opened up

her garden for us to visit and the most recent garden we have visited is Keeway near Burnham which is a mature garden with stunning views of the River Crouch.



Recent Gardening Group Trips

Gin Appreciation

The gin group continues to thrive and is at full capacity. It never fails to amaze how many gins there are to try, and we have not yet had to repeat any.

After a trip to the Isle of Wight gin distillery I would advise any of you Gin lovers out there to taste Mermaid Zest and let me know what you think. It's delicious.
Mary

Local History

We have had three varied and interesting visits so far this year.

Our first visit was to Chelmsford for a guided tour on Chelmsford's Industrial Heritage, where we heard about the range of industries which were established from the mid 1800's, including rope making, silk weaving, building buses to name just a few, through to the Marconi era and the Technology based industries of today.

Our June visit was to Bradwell on Sea where we had a tour of St Thomas's Church and it's history. The talk included the history of the nearby Chapel of St Peter on the Wall, which was founded by St Cedd in 654 in the ruins of the previous Roman Fort. After the talk some of the group travelled on to St Peter's, which is well worth a visit, and is still used for services.



St Thomas's Church



St Peter on the Wall

Our July visit was to Prittlewell Priory. The Priory was established by the Cluniac monks in the 12th century. The Priory continued to operate until 1536 when it was destroyed as part of the Dissolution of the Monasteries in Henry VIII's reign.

It then passed into private ownership where it remained until it was given to the Council in 1916, opening as Southend's first museum on 1922.



Prittlewell Priory

Our final visit for this year is on Thursday 14 September when we will have a guided tour of the Beeliegh area in Maldon. Note this is not our normal meeting day. Sign up sheets and more details will be out at the main meeting in August.

If you want to know more about the group or join us please come and see us at our table at the main meeting.

Best wishes

Kate, Mary and Allen

London Walks

London walks are still going ahead and being well attended but there is always room for new people.

Please look at the notice board at the u3a meeting for monthly updates.

Mary Brindley

rbmb4546@yahoo.co.uk

Paint and Pastels Art Group

Our Paint and Pastels art group meets on the 2nd Monday of the month at 10.00am. We aim to have a theme for each of our sessions although group members are always free to 'do their own thing' at the meetings - there may be

a painting or drawing that you have started that you would like to spend time on or perhaps discuss with the group.

Recent themes that we have covered in the group include *The Blocking in Technique*, *Mixed Media* and *Painting outdoors*. This was down by the creek. Our theme for August is *drawing negative spaces* (the gaps between objects)

If you would like more information about the group or, indeed, would be interested in joining please feel free to call Chris on **07946 024302**. If you are interested in joining, there is the option of joining us one month for a free 'taster session'.

Beginners and more experienced artists are welcome.

Below are three examples of images created by members of the group at recent meetings:



Using the Blocking in Technique



Mixed Media



Painting Outdoors

Pics and Bricks (Art and Architecture Appreciation)

Pics and Bricks arrange visits to places with an Art or Architectural interest. This will include Art Galleries and buildings with an architectural or historic interest. Typically, we will arrange for an expert guide to help with the enjoyment of the visit by explaining what we have gone to see.

In general, our events are open to all members of SWF u3a. If the number of places are limited by the venue priority may be given to Pics and Bricks Group Members but we would aim to accommodate all u3a members who may be interested. If you would like to become a Pics and Bricks member and be added to our email circulation list either contact Chris Miles (contact details below) or come to see us at our table at one of the monthly meetings at Champions Manor Hall.

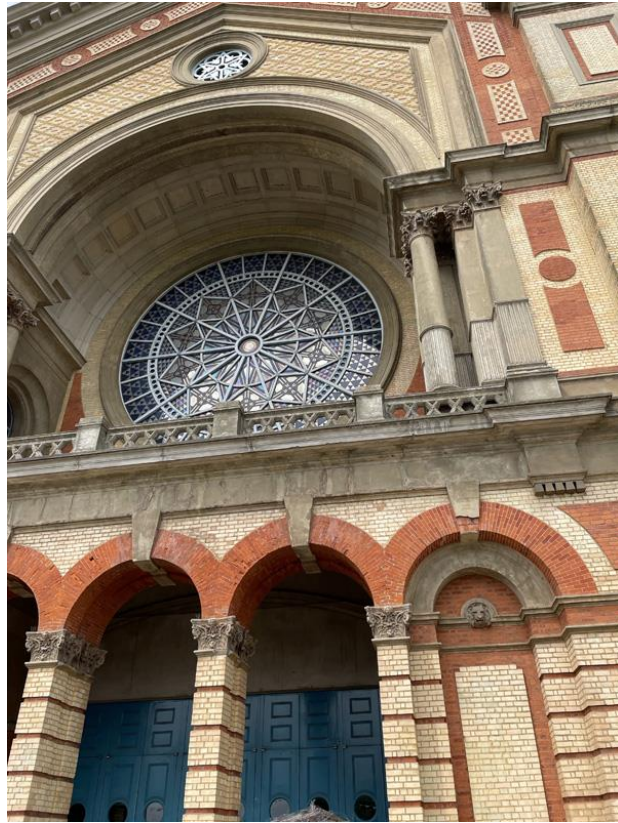
So far this calendar year our programme has included:

- Maggie Piper's talk titled **Street Art** - *the things we pass in the street* at Champions Manor Hall
- A visit to the Fry Gallery in Saffron Walden when we learnt about the Great Bardfield Artists, an Essex based group of artists from the 20th century.
- A guided visit to the Alexandra Palace
- A guided visit to the recently renovated Gainsborough's House and Gallery in Sudbury, Suffolk

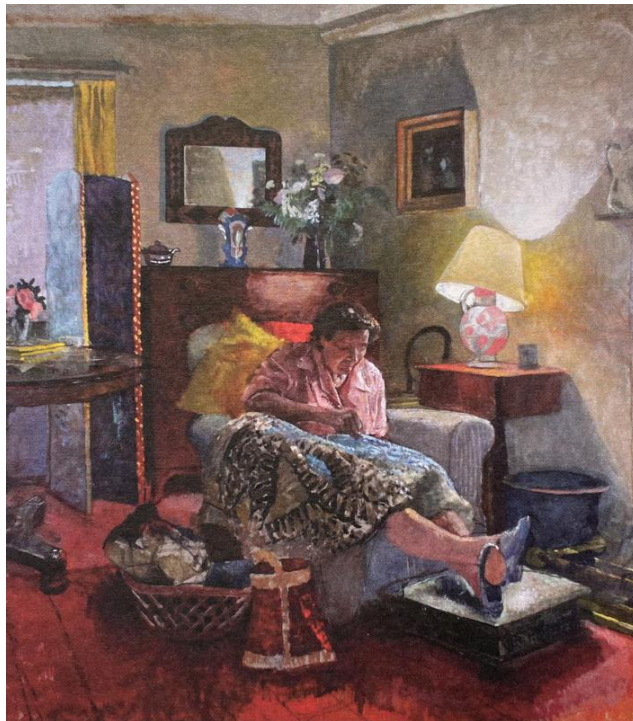
Our 2023 programme completes with a guided tour of the Turner Galleries at Tate Britain on Tuesday September 26th.

If you are interested in joining the Pics and Bricks group either contact Chris Miles directly or come to see us at our table at one of the monthly meetings at Champions Manor Hall.

Chris Miles (chrismilesu3a@gmail.com - 07946 024302)



Intricate Brickwork at Alexandra Palace



Lucy Weaving a Rug by John Aldridge, Great Bardfield Artist

Ten Pin Bowling

Hi everyone, I hope you are all enjoying the summer. Even though our sport is played inside, it is really nice not to have to go there in heavy shoes and coats. It is hard enough carrying our bowling ball cases! We have had another lovely few months of great support from our members. However, we have had one or two members with health issues, and we wish them a speedy recovery and can't wait to welcome them back to the bowling fold. The rest of us have had a most enjoyable time and one or two members have really improved their game! Phil has developed a very nice twist to his bowling action which has resulted in some good scores, but he still does not always beat our Sue whose consistency is hard to match. The rest of us have good and bad days but overall, I think everyone's best score has improved. The best part of this group is whatever sort of day you are having at bowling, the rest of the crew will always commiserate or cheer you on and there is always time for a good laugh over coffee. We have been down on numbers recently due, mostly, to holidays (my own included), but should soon be back to full strength. I wonder if some well deserved breaks and relaxation will improve our bowling or detract from it? We shall see...

Diane

Walking Group

We meet on the first and third Friday of the month at 10am at various locations depending on the walk. Most walks are of about 6 to 7 miles in length, and we walk at a fairly stiff pace. Unless the weather is really bad, we rarely cancel a walk. I have had to rely on a number of members to lead walk recently and for that I have been extremely grateful.

Walks for the next three months are shown below but may change due to my on-going problems and my reliance on volunteers to continue to lead walk in my absence. Changes are announced in advance either by email or WhatsApp so if you think you might like to join a walk, please let me know so that I can add your contact details to both lists.

August Walks

Friday 4th - Danbury Circular Walk - 7 miles - meet in Mayes Lane car park for 10 am start.

Friday 18th - Bicknacre/East Hanningfield Walk - 5.5 miles - meet in Brewers Arms car park just before 10 am.

September Walks

Friday 1st - Maldon/Langford/Beeleigh Walk - 6.5 miles - Meet in Maldon Tesco car park at far end for 10 am start.

Friday 15th - SWF/Stow Maries Aerodrome Walk - 6.5 miles - Meet in Compass Gardens car park just before 10 am.

October Walks

Friday 6th - Crondon Park Golf Course Walk - 7 miles - Meet in Gallywood car park, which is to the left, just off the Margaretting Road for 10 am start.

Friday 20th - Danbury/Sandon (new) Walk - 6.5 miles - Meet in Mayes Lane car park in Danbury just before 10 am.

Bob (07889949685 or robert.tyas82@gmail.com)

Wine Appreciation Group 2

"We have managed to maintain our Quarterly Subscriptions at £20.00 per person for some years which provides for the tasting of 7 wines at each meeting plus usual refreshments of cheese and Crackers. We meet on the second Friday of each month in the Small Hall at the rear of the SWF Village Hall. However, with the full agreement of the Group we have now increased our Quarterly Subscriptions to £25.00. This is not only to combat the effects of inflation, but to enable us to continue to sample top quality and more expensive wines which can usually be ordered for any members should they so wish.

To this end at our last tasting we had a bottle of PF red wine blend from South Africa at £19.99 a bottle (before our discount purchased at £17.99), such that 4 of our group purchased this wine. It was outstanding and fully endorsed by consensus of our group. It also must be said that a Grillo Italian wine from Aldi at £6.99 also was the star of the white wines the month before.

We have continued with "Call my Bluff" where we invite the group to listen to 3 different explanations as to which grape type /country it is from, of course only one is correct. In other words, different regions and countries often produce a quite different taste with the same grape, and the group tries to guess the correct one. This quarter it was the Riesling grape known for its German connections, however, this time it was from Australia and again a bottle purchased

from Aldi that was revealed. It is a bit of fun and again at least 50% of the group got it right when the cover was off.

We do source our wines from a number of different small suppliers, around the U.K, The Wine Society, plus individual one-off purchases from abroad as well as local providers such as Aldi when a particular wine appears to be of interest and meets the month's tasting theme.

The knowledge within the group is very diverse and that is what makes it enjoyable. We have small amount of wine education combined with a large amount of tasting and friendly chatter at each of our gatherings.

In August as is our tradition we will be having a garden tasting in a member's home where we hope the weather is fine along with the many different wines lined up.

In September we will be focussing on wine from the Languedoc region in Southern France

We do have a full group; one new member joined us this past quarter, but we would be delighted to take a person on a waiting list.

Just contact me - if you are interested in joining a friendly group with an interest in wine or call me if you want to know more.

Jeff Body SWF wine Group 2 - July 23

Wine Appreciation Group 3

The group continues to meet on the second Friday of the month in the Players' Lounge at the Village Hall.

We have had some interesting wines over the past few months. Members have been taking turns at presenting their selection, each choosing a different theme for the afternoon, giving a totally different take on the wines. Many have approached the task with some intrepidation, but then said what good fun it had been looking for something different.

August sees us having an informal meet up in a member's garden with a BBQ. Fingers crossed for a nice afternoon, preferably not quite as hot as last year.

Sheila

Groups Monthly Meeting

| Days of the week | | Weeks of the Month | | | |
|--|----|----------------------------------|--------------------------------|--|---|
| | | 1st | 2nd | 3rd | 4th |
| Monday | AM | Golfing Book Group 1 | Golfing | Golf Paints & Pastels Art Group | Golf Strollers |
| | PM | Book Group 2 (NCA) | Gardening | | Eco Group |
| Tuesday | AM | | | | Picks & Brick (Art & Architecture) |
| | PM | Gin Appreciation | Local History Tai Chi | | Picks & Brick (Art & Architecture) Tai Chi |
| Wednesday | AM | | Fine Your Voice | London Walks 1 | |
| | PM | Monthly Meeting | All Kinds of Music (NCA) | | Cards and Games for Fun |
| Thursday | AM | Craft Science & Technology | Craft | Craft | London Walks 2 Craft |
| | PM | | French | | |
| Friday | AM | Bowling Walking | Bowling | Bowling Walking Digital Photography | Bowling |
| | PM | | Wine Groups 1, 2, &3 | | Whisky Appreciation |
| Curry Clique 4th Monday of odd months, Singles Social & Dining as arranged | | | | | |

For more details on any of these groups please contact the Group Coordinator Allen Surrey 01245 320743

Deadline for Inclusion in Next Newsletter

Please send your contributions to the next Newsletter by Wednesday October 18th, to Bob Tyas at robert.tyas82@gmail.com or deliver to 55 Clements Green Lane, SWF. Alternatively, you can ring him on 07889949685.